



Municipal Services Agency
Paul J. Hahn
Administrator

COUNTY OF SACRAMENTO CALIFORNIA

DEPARTMENT OF ENVIRONMENTAL REVIEW AND ASSESSMENT

JOYCE HORIZUMI
Director,
Environmental Coordinator

REVISED NOTICE OF PREPARATION

APRIL 19, 2010

TO: ALL INTERESTED PARTIES

**SUBJECT: REVISED NOTICE OF PREPARATION OF A DRAFT ENVIRONMENTAL IMPACT REPORT
FOR KIEFER LANDFILL SPECIAL PLANNING AREA (SPA), Control No. 09-00173**

The subject project

Sacramento County will be the CEQA Lead Agency for preparation of an Environmental Impact Report (EIR) for a project known as KIEFER LANDFILL SPECIAL PLANNING AREA (SPA). This Notice of Preparation has been sent to responsible and trustee agencies and involved federal agencies pursuant to Section 15082 of the CEQA Guidelines. Agencies should comment on the scope and content of the environmental information that is germane to the agencies' statutory responsibilities in connection with the proposed project. Due to the time limits mandated by State law, your response must be sent at the earliest possible date, but not later than 30 days after receipt of this notice.

The project description, location, and the probable environmental effects are contained in the attached materials and may also be viewed online at:

<http://www.dera@saccounty.net>.

Please send your Agency's response to this Notice to:

Joyce Horizumi, Environmental Coordinator
Department of Environmental Review and Assessment
827 7th Street, Room 220, Sacramento, CA 95814
or via e-mail at: dera@saccounty.net.

Your response should include the name of a contact person in your agency.

Agencies with specific questions about the project should contact Peter Morse, DERA Project Manager, at (916) 874-7914 for further information.

PROJECT TITLE:

KIEFER LANDFILL SPA

CONTROL NUMBER:

2009-00173

PROJECT PROPONENT:

Department of Waste Management and Recycling;

PROJECT DESCRIPTION AND LOCATION:

The project site is located approximately 15 miles southeast of the City of Sacramento at the intersection of Kiefer Boulevard and Grantline Road adjacent to the southeastern boundary of the City of Rancho Cordova in unincorporated Sacramento County (Plate NOP-1).

BACKGROUND

A Notice of Preparation (NOP) for the Kiefer SPA project was previously released by the Department of Environmental Review and Assessment (DERA) on February 1, 2010. Subsequently, the Office/Commercial District was eliminated from the SPA, which reduced the project area by 135 acres. See Revised Plates NOP 2, 3 and 4). The project objectives have not changed. Previously received comments are still valid and will be considered. In addition, any new comments concerning the modified project will also be considered. Revisions to NOP resulting from the removal of the Office/Commercial designation are indicated using bold print for additions and strikeouts for deletions.

The project includes the following changes of land use designations:

1. A **General Plan Amendment from** approximately ~~4,615~~ **1,480** acres designated General Agriculture (80 ac) and 1,085 acres designated Public & Quasi-Public **to** 1,355 acres designated General Agriculture (80 ac) which includes the Habitat Preserve District and the Deer Creek District and ~~4,345~~ **1,210** acres Public & Quasi-Public, which includes the Landfill District, and the Waste Stream Industry District. ~~and the Office/Commercial District.~~ See Plates **Revised** NOP 2, 3 and 4 and Table NOP-1.
2. A **Community Plan Amendment and Rezone from** AG-80 **to** Special Planning Area (SPA) on approximately ~~2,700~~ **2,565** acres.
3. A **Zoning Ordinance Amendment** to add the Kiefer Landfill Special Planning Area (SPA).

Table NOP-1 Kiefer Bufferlands SPA District Information

District	Proposed Acreage (Approx.)	Proposed Gen. Plan Designation
Waste Stream Industry	569 acres	Public/Quasi-Public
Landfill	651 acres	Public/Quasi-Public
Habitat Preserve	1,119 acres	General Ag (80 ac)
Deer Creek	226 acres	General Ag (80 ac)
Office/Commercial	135 acres	Public/Quasi-Public

PROJECT OBJECTIVES:

The primary goals of the SPA are to:

- a. Provide a buffer for the landfill from incompatible uses.
- b. Promote the collocation of compatible commercial and industrial uses related to the landfill and associated waste streams, thus also improving waste diversion.
- c. Facilitate renewable energy projects.
- d. Preserve valuable habitat of many types.
- e. Enhance the connectivity of open spaces and natural resources in the east County area.

ENVIRONMENTAL/LAND USE SETTING:

The Kiefer landfill began accepting waste in 1967 and currently accepts approximately 700,000 tons of waste annually. Through adoption of the 1993 General Plan, the County established a 2,000 foot buffer zone around the Kiefer Landfill. The County now owns approximately 3,500 acres of property within and adjacent to the landfill, of which this project encompasses ~~2,700~~ **2,565** acres of that land. The project limits include the existing landfill and buffer zone. The landfill is a permitted solid waste facility; it contains vacant areas for future expansion, an active disposal pit, various office buildings, and storage or parking areas used for equipment associated with operation of the facility. The buffer zone is currently vacant land zoned for agriculture. There are a number of biological resources within the buffer zone including vernal pools in the upland areas and riparian habitat along the Deer Creek corridor. The riparian area, wetlands, and open fields provide habitat for birds, small mammals, and other wildlife.

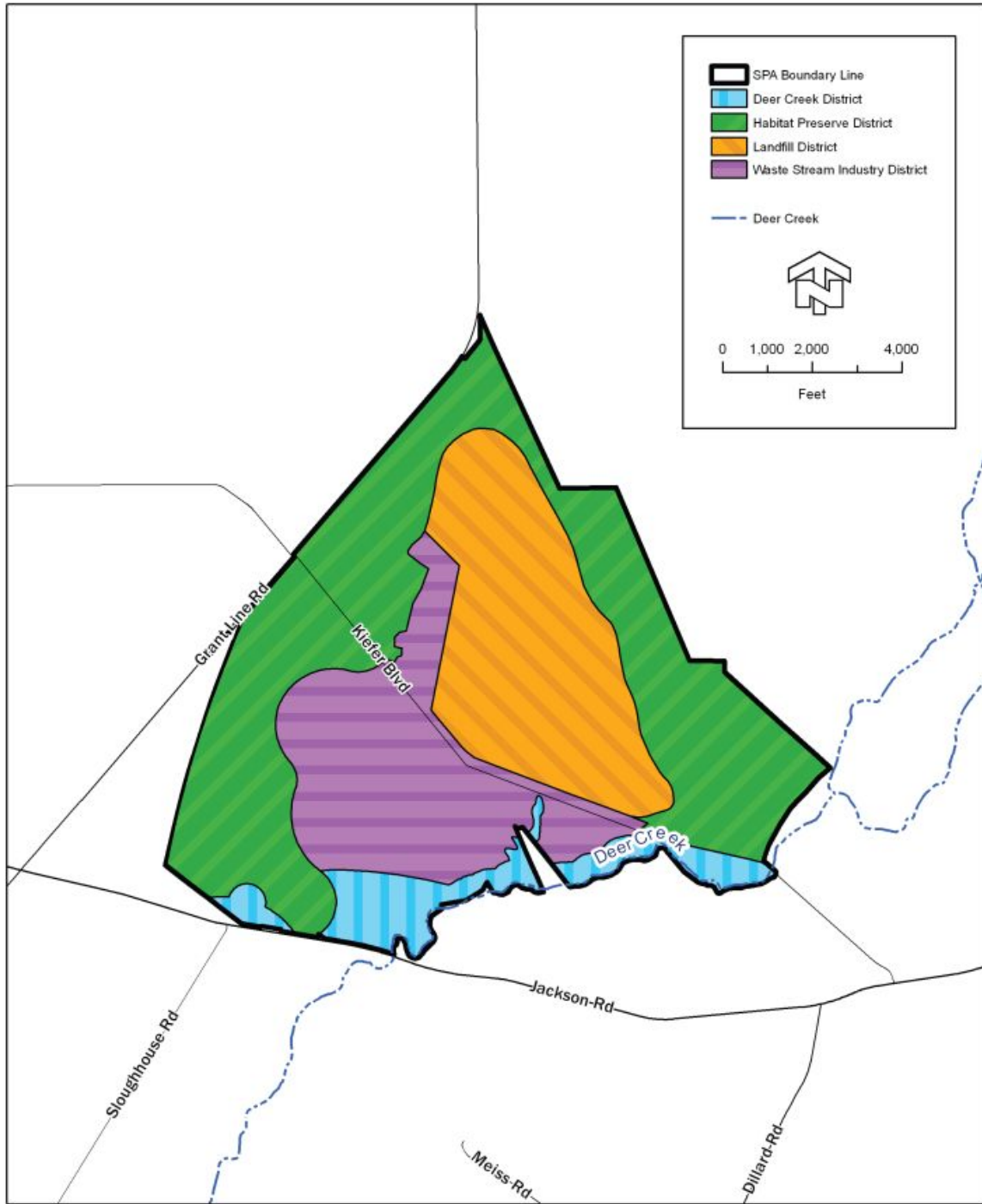
PROBABLE ENVIRONMENTAL EFFECTS/EIR FOCUS:

The EIR will focus primarily upon issues associated with land use, traffic generation, air quality, climate change, biological resources, hazardous materials, public services, hydrology, cultural resources, and project alternatives.

INTENDED USES OF THE EIR:

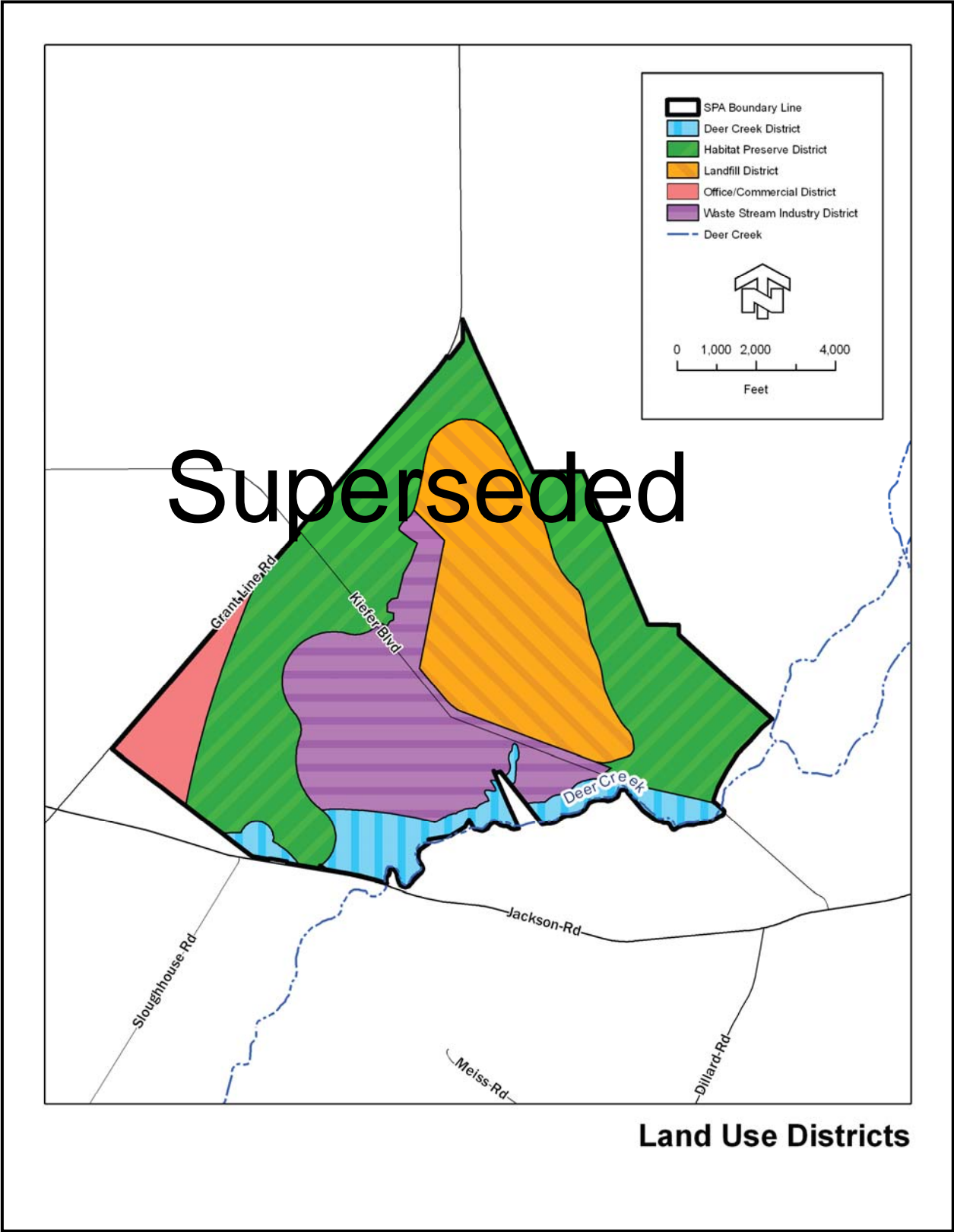
The Sacramento County Board of Supervisors will use the information contained in the EIR in evaluating the proposed project and rendering a decision to either approve or deny the project.

Revised Plate NOP 2 Project Site; Land Use Districts



Land Use Districts

Plate NOP 2 Project Site; Land Use Districts



Revised Plate NOP 3 Existing General Plan Land Use Designations

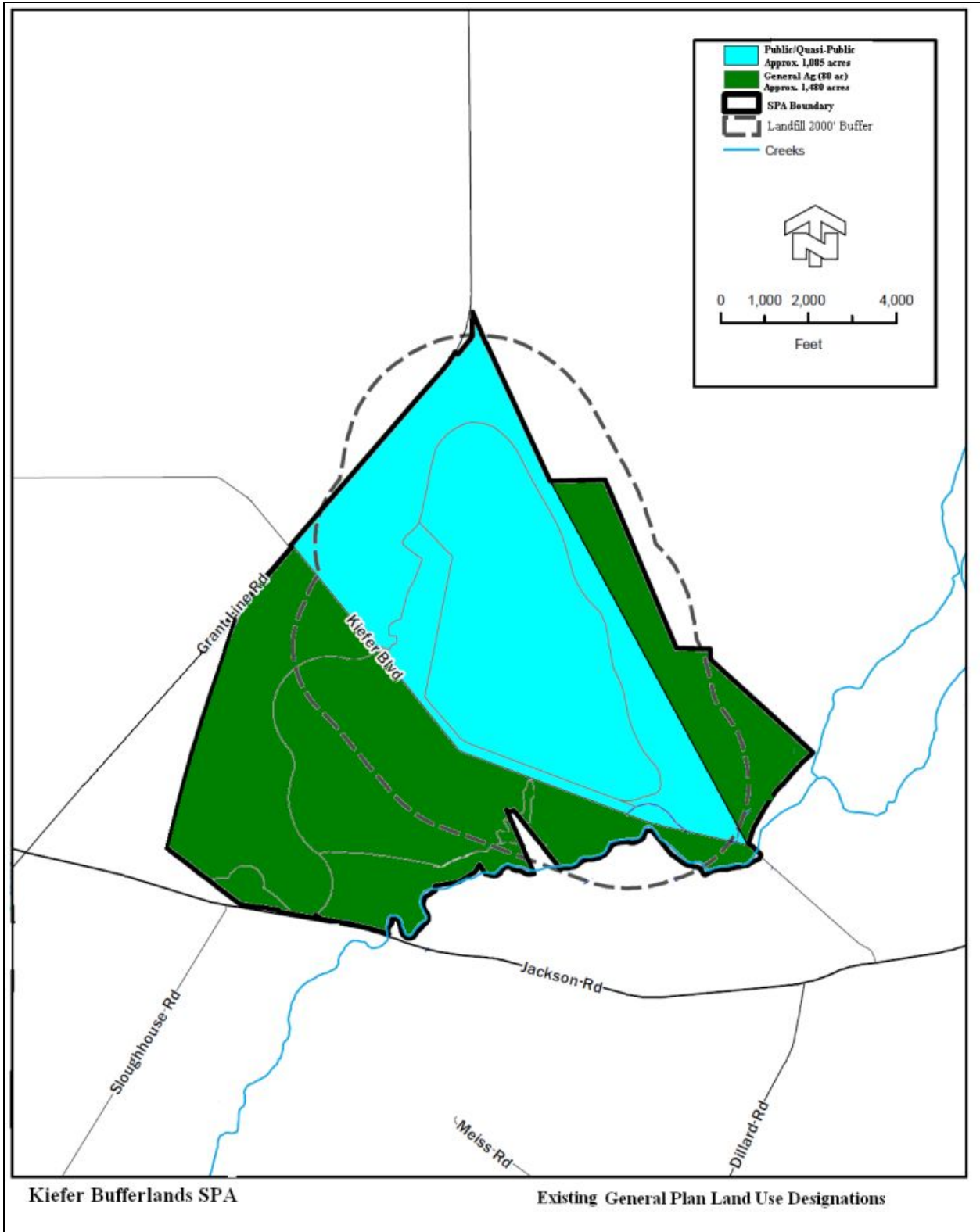
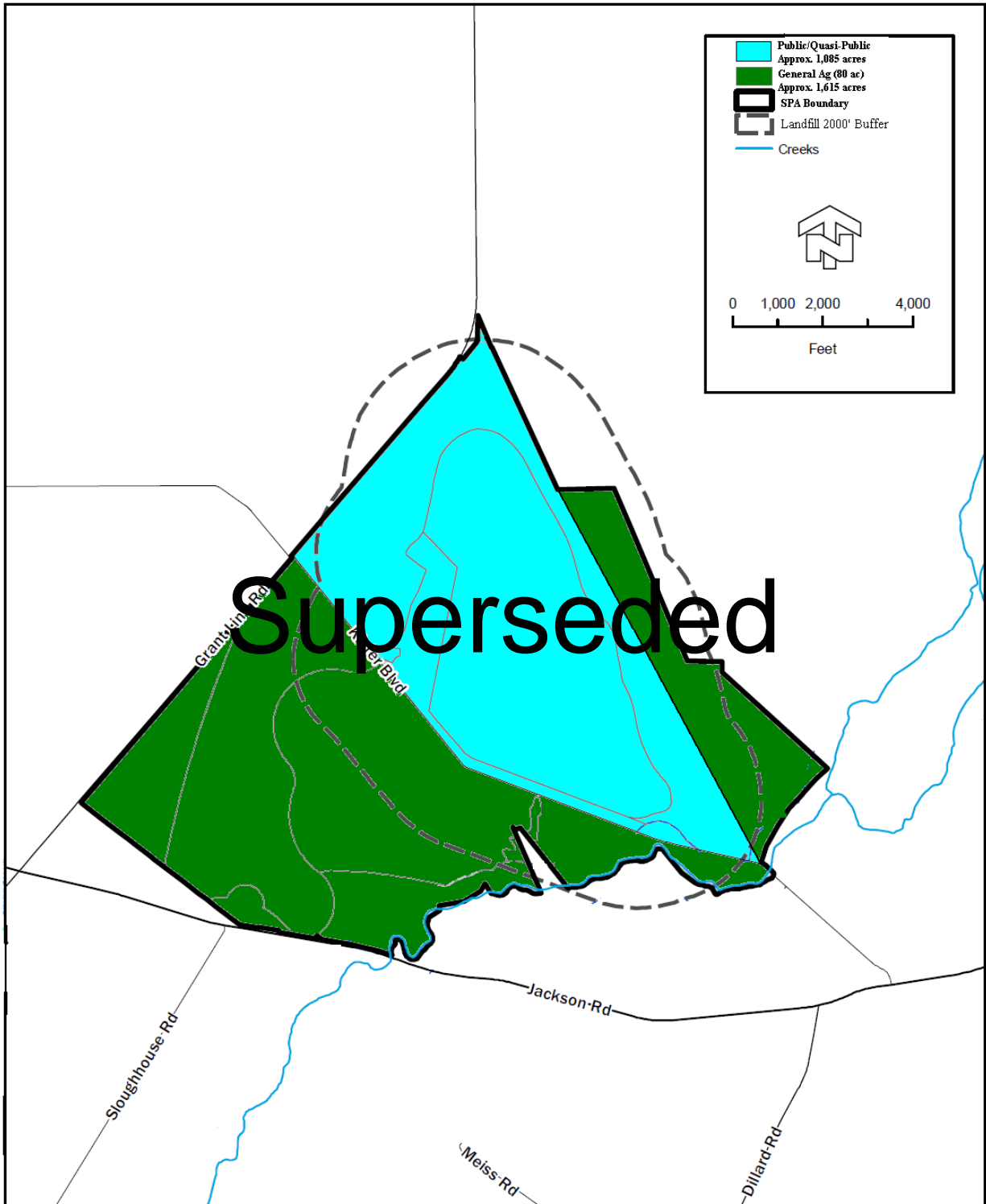


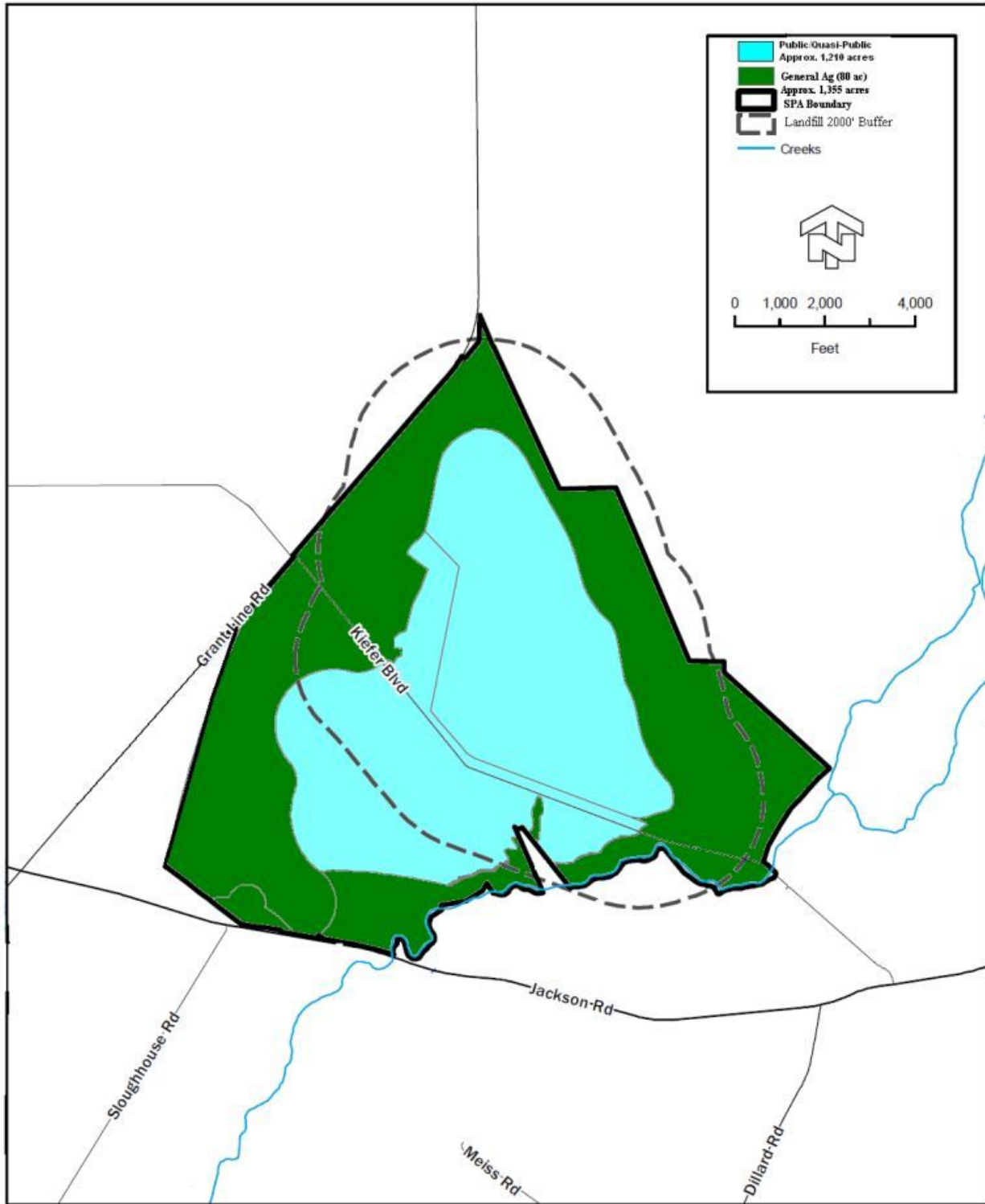
Plate NOP 3 Existing General Plan Land Use Designations



Kiefer Bufferlands SPA

Existing General Plan Land Use Designations

Revised NOP 4 Proposed General Plan Land Use Designations



Kiefer Bufferlands SPA

Proposed General Plan Land Use Designations
Revised 2/10/10

NOP 4 Proposed General Plan Land Use Designations

